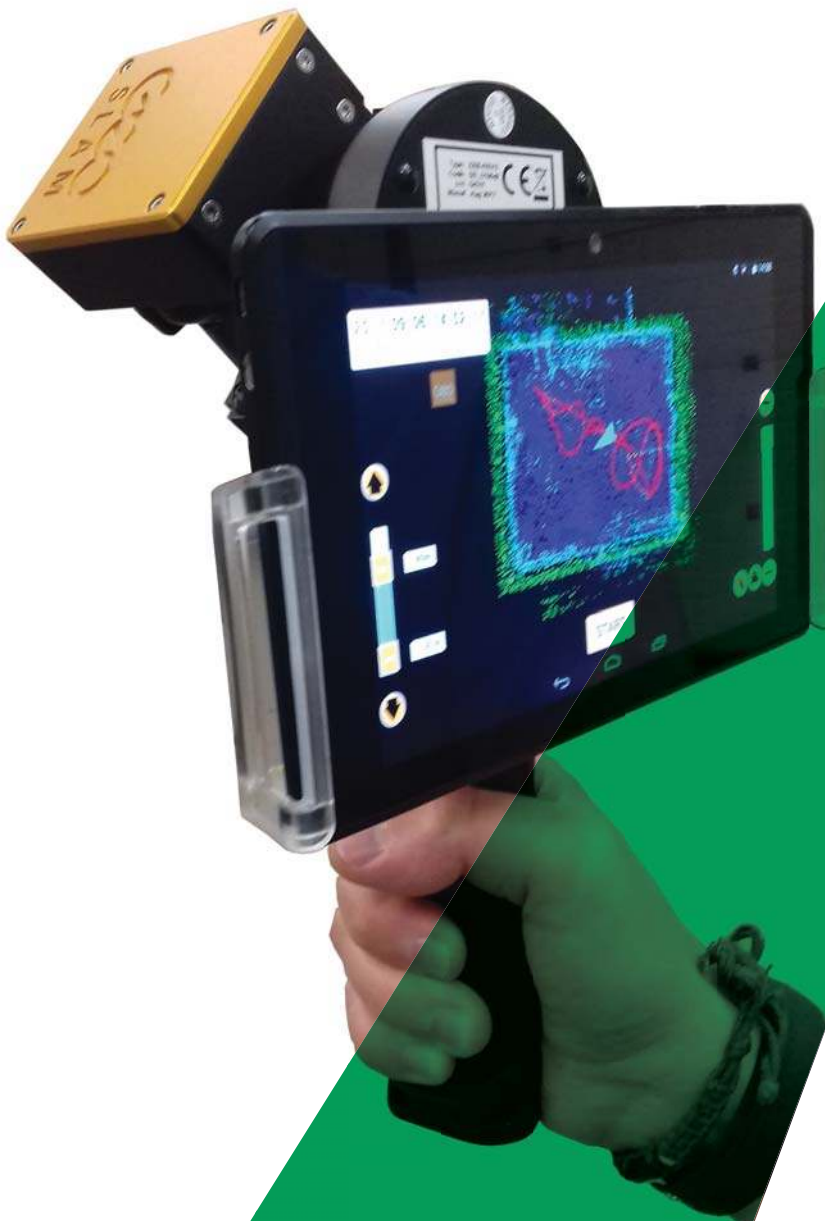


ZEB-REVO RT Solution

The brand new realtime solution from the experts in “go-anywhere” 3D mobile mapping technology.

Handheld, lightweight and easy to use laser scanners that allow you to rapidly collect and process scan data, simultaneously whilst on the move.



The brand new ZEB-REVO RT solution, sold via a global network of over 50 distributors in over 40 countries, across 6 continents.

System Features

| | |
|-----------------------|--|
| Maximum Range | 30m* |
| Data Acquisition Rate | 43,200 points/sec |
| Resolution | 0.625° horizontal, 1.8° vertical |
| Angular FOV | 270° x 360° |
| Supply Voltage | 14.8V nominal |
| Supply Current | Max 10A, nominal 2.5A |
| Power Consumption | 30W nominal |
| Operating Temperature | +10° to +30°C |
| Operating Humidity | Avoid condensing humidity |
| Mounting Operation | Removable handle provided, can also be pole or vehicle mounted |

**Maximum range to Kodak white card indoors (90% reflectivity)*

Outdoors range may be reduced to 15-20m depending on environmental conditions

Processing Software

Requires **GeoSLAM Hub** - our 'All in One' point cloud manipulation software:

- Integrated 2D and 3D viewer
- Modify and reprocess 3D data
- Merge multiple datasets
- Create 2D layouts, sections and elevations with **GeoSLAM Draw**
- Export a range of industry standard formats

Data Features

| | |
|----------------------------|---|
| Data Storage Capacity | 120GB |
| Raw data file size | ~10MB for every 1 min scanning |
| Processed data file size | ~8MB for every 1 min scanning |
| Default output file format | Multiple formats including .LAS, .PLY and .e57. |
| Compatibility | GeoSLAM data is compatible with all major CAD software packages |
| Graphical User Interface | Compatible with any web-enabled tablet or mobile phone** |
| WiFi Range | Upto 15m from datalogger |

***Tablet or phone not included with kit*

System Accuracy

| | |
|----------------------------|-------------------------------------|
| Relative Accuracy | 1 - 3cm |
| Absolute Position Accuracy | 3 - 30cm (10 mins scanning, 1 loop) |

Sensor Information

| | |
|--------------------|-------------------|
| Laser Safety Class | Class 1 Eye Safe |
| Laser Wavelength | 905nm |
| Scanner Line Speed | 100Hz |
| Scanner Resolution | 0.625° horizontal |
| Rotation Speed | 0.5Hz |

Battery

| | |
|-------------------|-------------------------|
| Battery Type | Lithium Ion |
| Capacity | 50Wh |
| Nominal Voltage | 14.8V |
| Battery Life | 1.5 hours |
| Charge Time | 8 – 12 hours |
| Chargers Supplied | UK, USA & EU |
| Weight | 550g |
| Battery Release | Quick-release mechanism |

Casing

| | |
|------------------------------|---------------------------------------|
| IP Rating | IP51 (dust-protected, water dripping) |
| Cable Connectors | LEMO multi pin |
| Weight (scanner) | 1.0kg |
| Weight (processing unit) | 1.7kg |
| Weight (total system) | 6.3kg |
| Dimensions (processing unit) | 220 x 180 x 470mm |
| Dimensions (hard case) | 460 x 370 x 180mm |

ZEB-CAM Accessory

| | | | |
|-------------------|------------------------|----------------|---|
| Camera Type | GoPro Session | Logging Medium | Internal SD card |
| Mode | Video | Power Supply | Internal Battery |
| Video Resolution | 1440p | Battery Life | 2 hours continuous use |
| Frames per Second | 30 | Image Syncing | Optical flow using integrated inertial sensor |
| Image Resolution | 1920 x 1440 | Connection | 1.5m cable with multi pin LEMO connector |
| Field of View | Ultrawide (~120°x 90°) | Software | Requires GeoSLAM Desktop V3 or GeoSLAM Hub |



Get in Touch

GeoSLAM
Unit 1 Moorbridge Court
Moorbridge Road East
Bingham
Nottinghamshire
NG13 8GG

+44 (0) 1949 831 814
info@geoslam.com
[@GeoSLAMLtd](https://www.instagram.com/GeoSLAMLtd)



[GeoSLAM.com](https://www.geoslam.com)